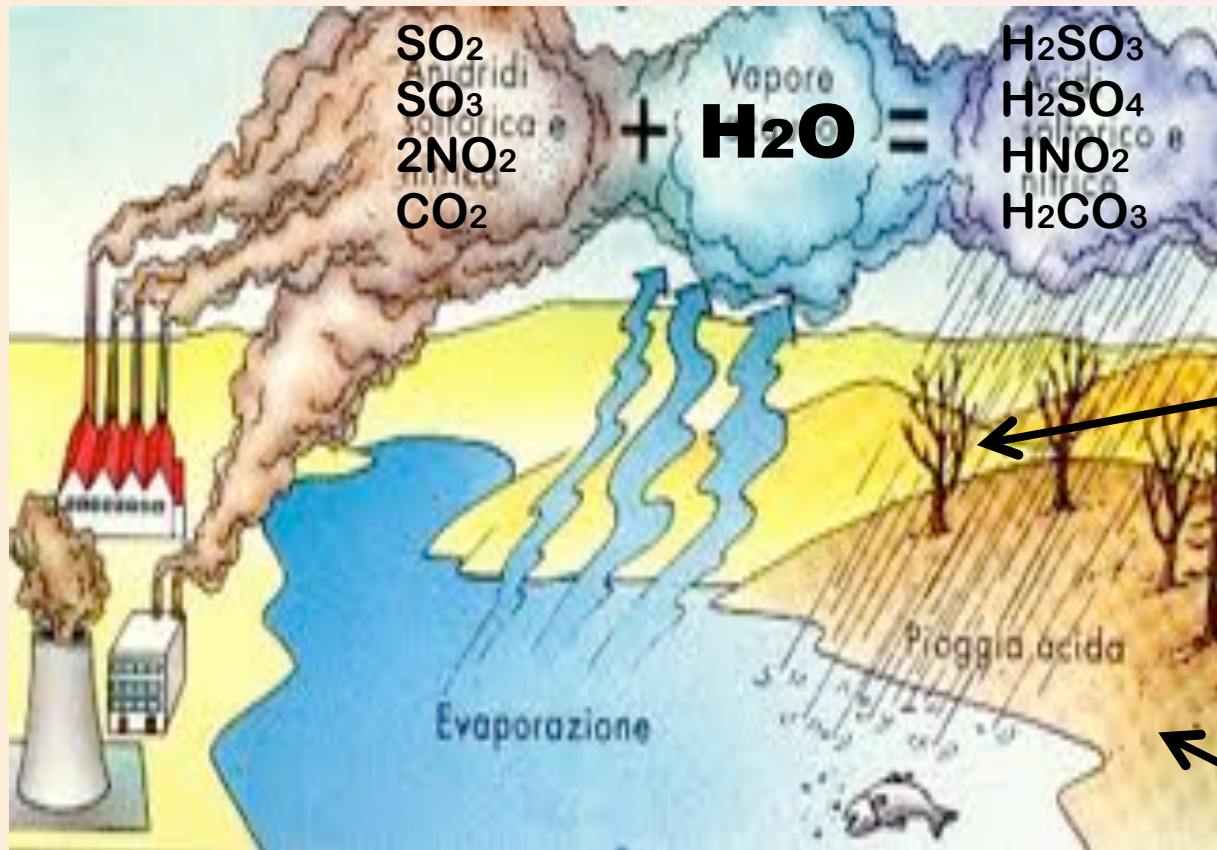




# PIOGGE ACIDE

# FORMAZIONE

# FORMAZIONE

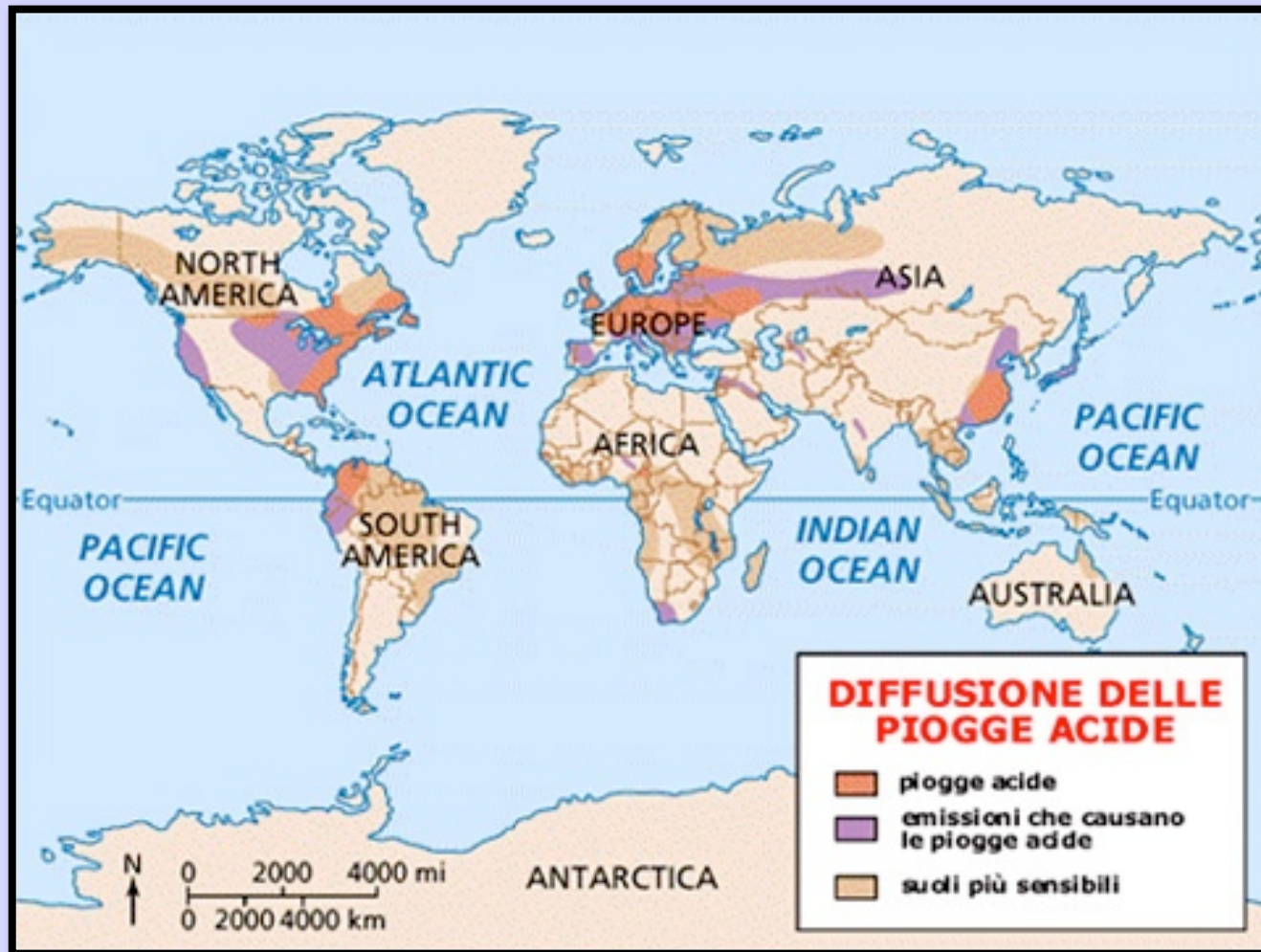


Deposizione  
umida

Deposizion  
e secca



# diffusione





# EFFETTI SULLE ACQUE SUPERFICIALI

Abbassamento  
o del pH

Scomparsa di specie acquatiche



Molluschi



Crostacei



Embrioni di  
rana



Anfibi



Salmonidi

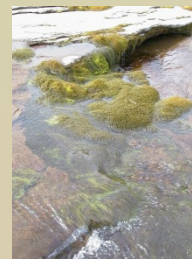
Diminuzione della microflora e delle macrofite e aumento delle alghe filamentose e dello Sphagnum



Lago acido



Sphagnum



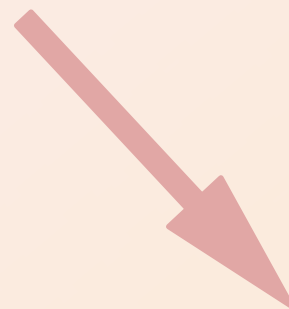
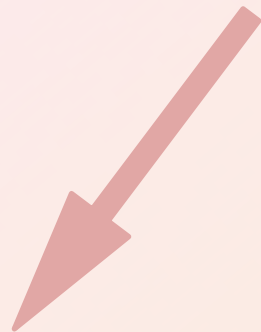
Macrofite



Alghe filamentose

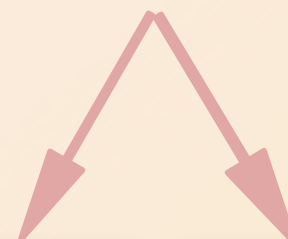


# EFFETTI SULLA SALUTE UMANA



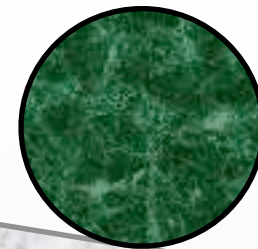
DIRETTI

INDIRETTI





# EFFETTI SUI MATERIALI

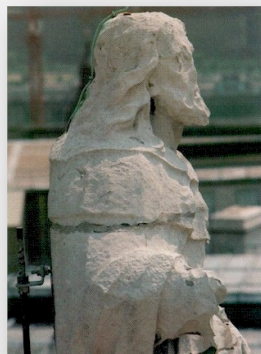


## AZIONE CHIMICA



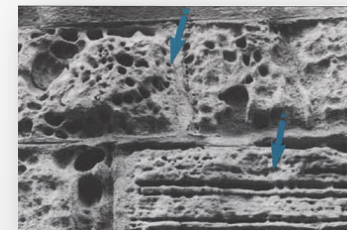
1906

1966



## AZIONE MECCANICA

•ESFOLIAZIONE



•ALVEOLIZZAZIONE



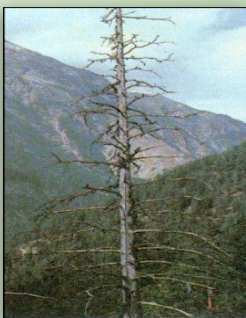
•DISGREGAZIONE SABBIOSA



# Effetti sulla vegetazione

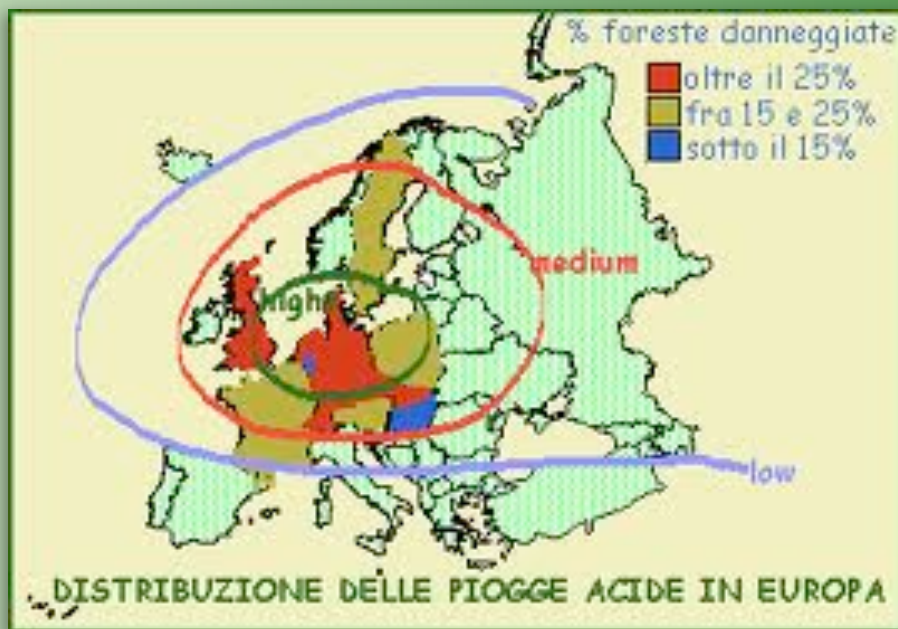
## Diretti

Attraverso il fogliame



## Indiretti

Attraverso il suolo



XM.3H

# POSSIBILI RIMEDI



**DIMINUIRE CONSUMO  
ENERGETICO**

**SOSTITUIRE FONTI ENERGETICHE NON  
RINNOVABILI E INQUINANTI CON FONTI  
RINNOVABILI E PULITE**

XM.3H